



wybór  
Innovation for a better lifestyle

DIGITAL  
SIGNAGE

Unleash the power of  
**Digital Signage**



**PRODUCT  
CATALOGUE**



# wybór

Innovation for a better lifestyle

A series of horizontal dashed lines for writing, spanning the width of the page.



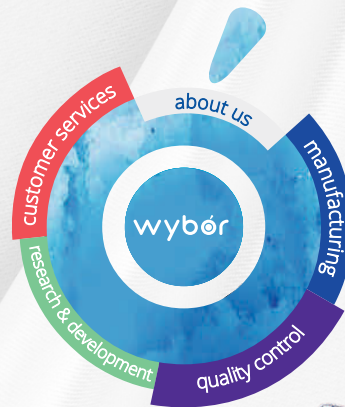
## ABOUT US

The brand owners of Wybor, Malhotra Electronics Private Limited (MEPL), started the journey four decades ago, under exceptionally humble circumstances, with brothers Manjeet Singh Malhotra, Tajinder Pal Singh Malhotra & Ravinder Singh Malhotra being designers, technicians, salesmen, accountant, service-engineers, proprietors and everything else to the business.

Years of indigenous drive has today put them in a position of unique strength - a combination of domain expertise and comprehensive back-end integration of manufacturing capabilities, rivaled perhaps no other in India.

## The 7 point advantage

- More Than 4 Decades of Knowledge & Skills
- Comprehensive Manufacturing in India
- Global Sourcing of materials
- Wide Range of Consumer Electronics
- Highly Customer-Centric Orientation
- Advanced Research & Development
- Stringent Quality Control Norms







# Easel Standee

  
Content Mgmt Sys.  
(Optional)

  
**SUPERLUMA®**  
600 cd/m<sup>2</sup> (Nits)

  
Operation  
(24X7)

  
28 mm  
Thickness

  
4G Sim Slot  
(Optional)

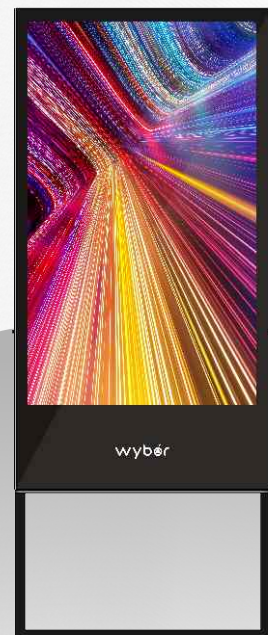
  
WiFi + LAN

  
Toughened Glass

  
Capacitive Touch  
(Optional)

**Applications :** Restaurants, Banquet Halls, Showrooms

Patent No. 390889-001



	ES-DS1331	ES-DS1332	ES-DS3568
Screen Size	24/32/43		
Resolution	1080 x 1920		
Brightness	(600cd/m <sup>2</sup> ) / (900 ~ 1200 cd/m <sup>2</sup> )		
Viewing Angle	178°(H) / 178° (V)		
Operating Systems	Android 10		Android 11
CPU	A133, Quad Core ARM Cortex-A53, 1.5GHz		Rk3568, 4-core ARM Cortex-A55, up to 2.0 GHz
GPU	GE8300-Quad core		Quad Core Mali-G52 2EE
RAM/DDR-4	1GB	2GB	4GB
ROM/eMMC	32GB		
Operating Hours	24X7		
I/O Ports	USB-2, LAN, Ear Phone		USB-2, LAN, HDMI-OUT
Network	LAN, Wifi (4G module Optional)		
Power Supply	100-240VAC / 50Hz		
Certifications (BIS)	R-93026379		



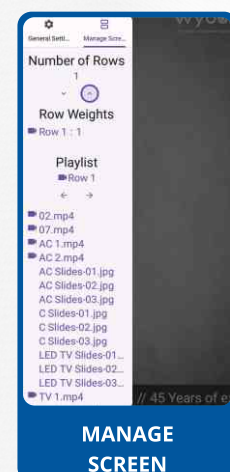
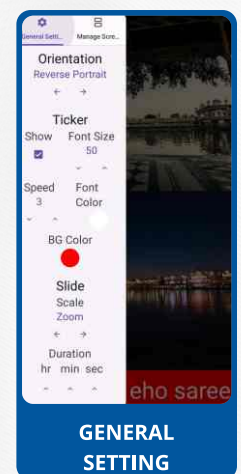


# PENDRIVE BASED SOFTWARE

Offline pendrive-based solution is best suited for clients who do not need to update signage in multiple locations online. Our solution allows clients to update content easily from a pen drive or mobile app. The screen can be divided into multiple rows to show more than one content at a time. Ticker widget is also provided to show scrolling text at the bottom of the screen.

## FEATURES

- Offline Operation (no Internet Required)
- Plug In, Copy, Plug Out
  - Content Stays In The Device's Memory Even After The Pendrive Is Removed
- Multiple Row Display
  - Row Height Ratios
  - Edit The Playlist For Each Row
- Scrolling Ticker Display
  - Speed
  - Ticker Colour
  - Ticker Font Size
- Hd Video And Photo Display
  - Different Fit Modes (fill, Fit, Zoom)
  - slide background colour
  - slide duration for photo slides
- Load and manage content from the mobile app
  - works on the same LAN/WiFi network





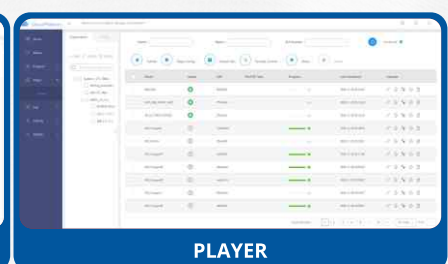
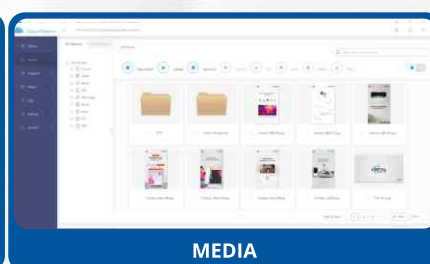
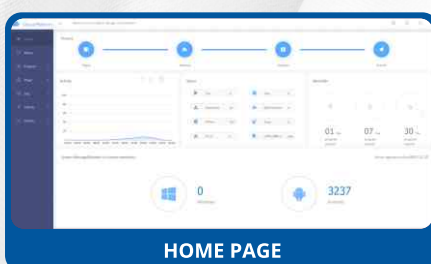


# CLOUD BASED SOFTWARE

Our cloud-based solution allows clients to load content on devices remotely through the internet. With multi-user access with roles, multiple users can access the software with different permissions according to the client's requirements. Signage devices can be monitored for uptime, status and content playbacks. Software updates to devices can be delivered remotely.

## FEATURES

- Push content to devices from cloud based CMS
- Content downloads and plays offline
- Internet-based widgets (RSS, Weather)
- Device grouping
- Multi-user operation with roles
- Track the percentage of terminals online
- Filter devices according to their current status (play, stop offline etc.)
- Upload and manage content in folders (picture, video, music, RSS and more)
- Play list creator with multiple content display zones
- Track device on-time and off-time for the day
- Monitor device events
- Playback log for content play count
- Software updates delivered remotely



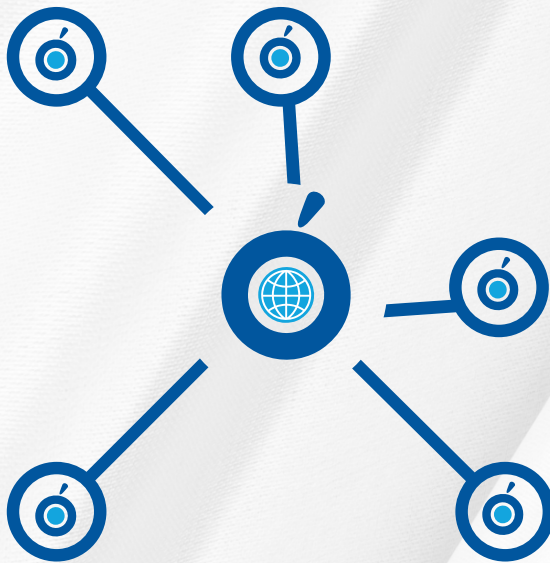


# OUR VALUED CUSTOMERS





# SERVICE NETWORK



## STRONG AND WIDE SERVICE NETWORK

- 800+ Service center network
- 18000+ Pin Codes
- 3000+ Towns
- 150000+ Localities
- 28 States and 9 UT's

**CUSTOMER CARE : 8750035000**

**Email : [info@wybor.in](mailto:info@wybor.in)**

**HEAD OFFICE: NOIDA, UP (DELHI NCR)**



## Manufacturing







# wybór

Innovation for a better lifestyle

A large area of the page is filled with horizontal dashed lines, providing a space for writing or drawing.



# Future of Digital!



## Contact Us!

- ✉ [info@wybor.in](mailto:info@wybor.in)
- ☎ 8750035000, 9810585974
- 🌐 [digisign.wybor.in](http://digisign.wybor.in)
- 📍 Malhotra Electronics Pvt. Ltd.  
11-C Udyog Kendra, Echotech III, Greater Noida - 201306, UP

